



One Source





**Cone  
Crushers**



**Gyratory  
Crushers**

**Low-Speed  
Sizers**





**SAG Mills**



**Ball Mills**







**Krebs  
Hydrocyclones**



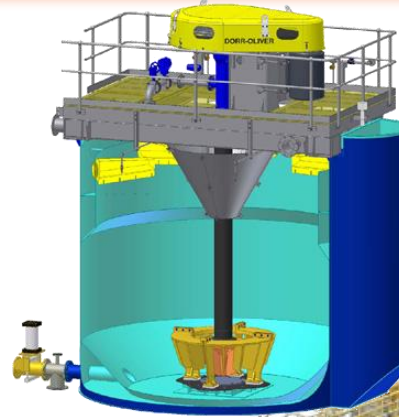
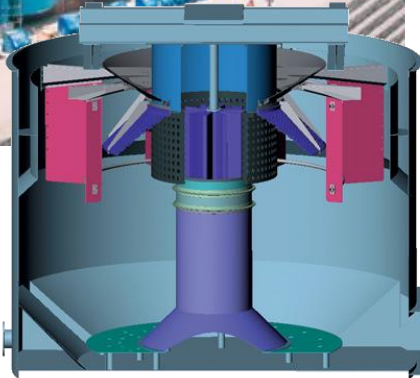
## Spiral Classifiers



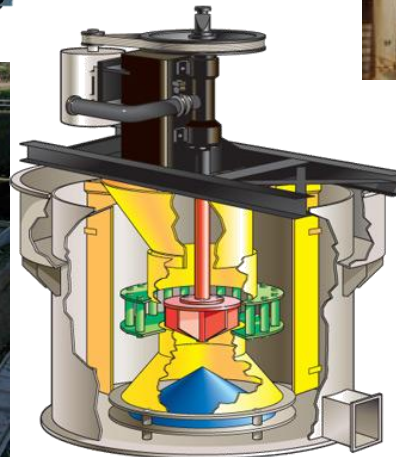




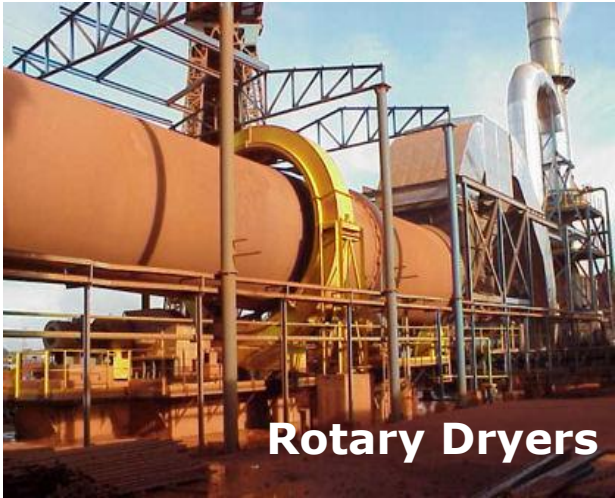
**SmartCell™  
Flotation**



**Dorr-Oliver®  
Flotation Cells**



**FFE Xcell™  
Flotation Cells**



**Rotary Dryers**



**Rotary Kilns**



**Preheaters**

**Gas  
Suspension  
Calciners**







**millMAX® Pump**

**Diaphragm Pumps**



**Valves**



**Tailings Thickeners**



**Traction Thickeners**



**Paste Thickening**



**E-Cat® Clarifier Thickeners**



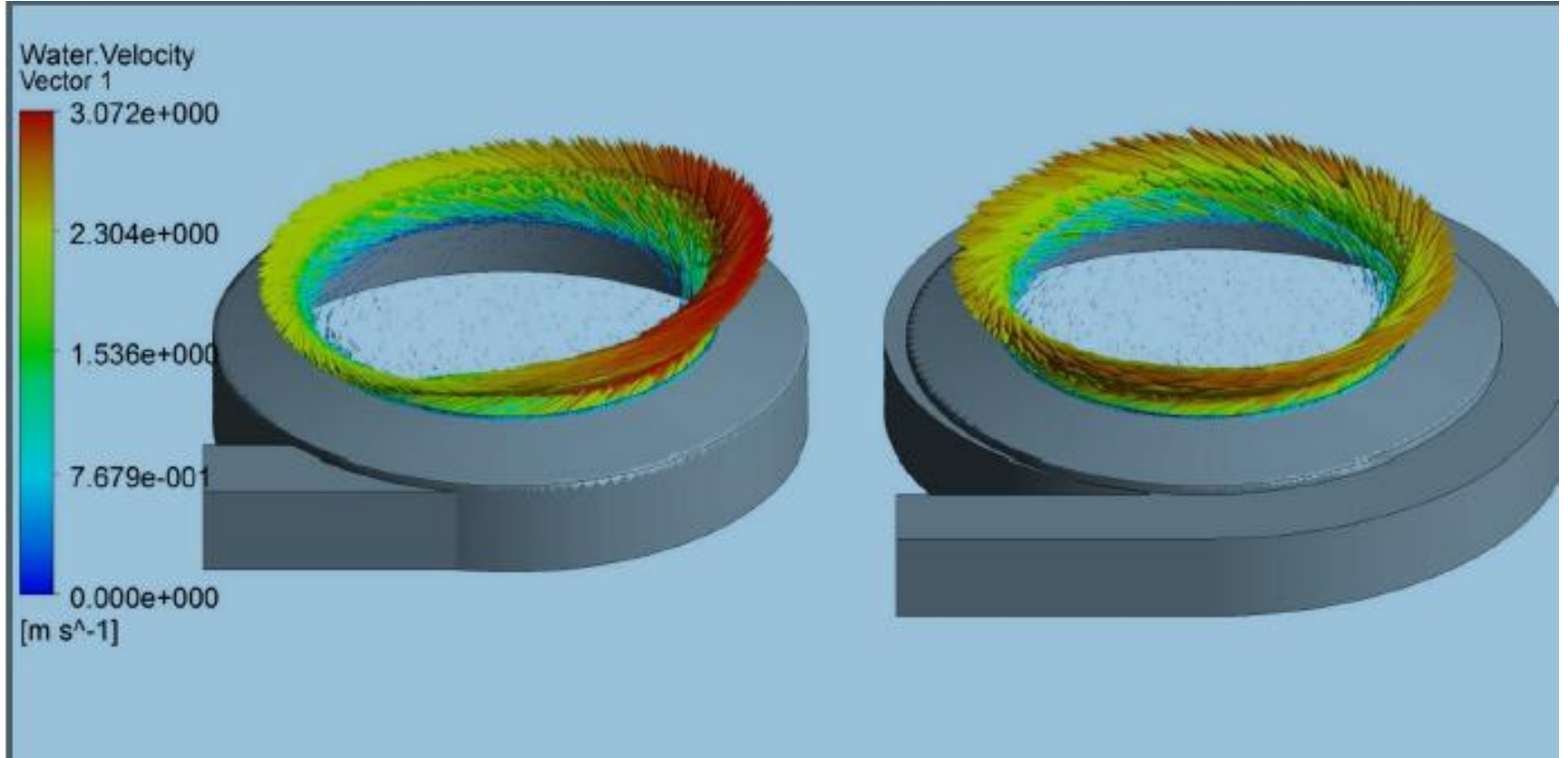
**World leader in thickener design and installation for big plants**

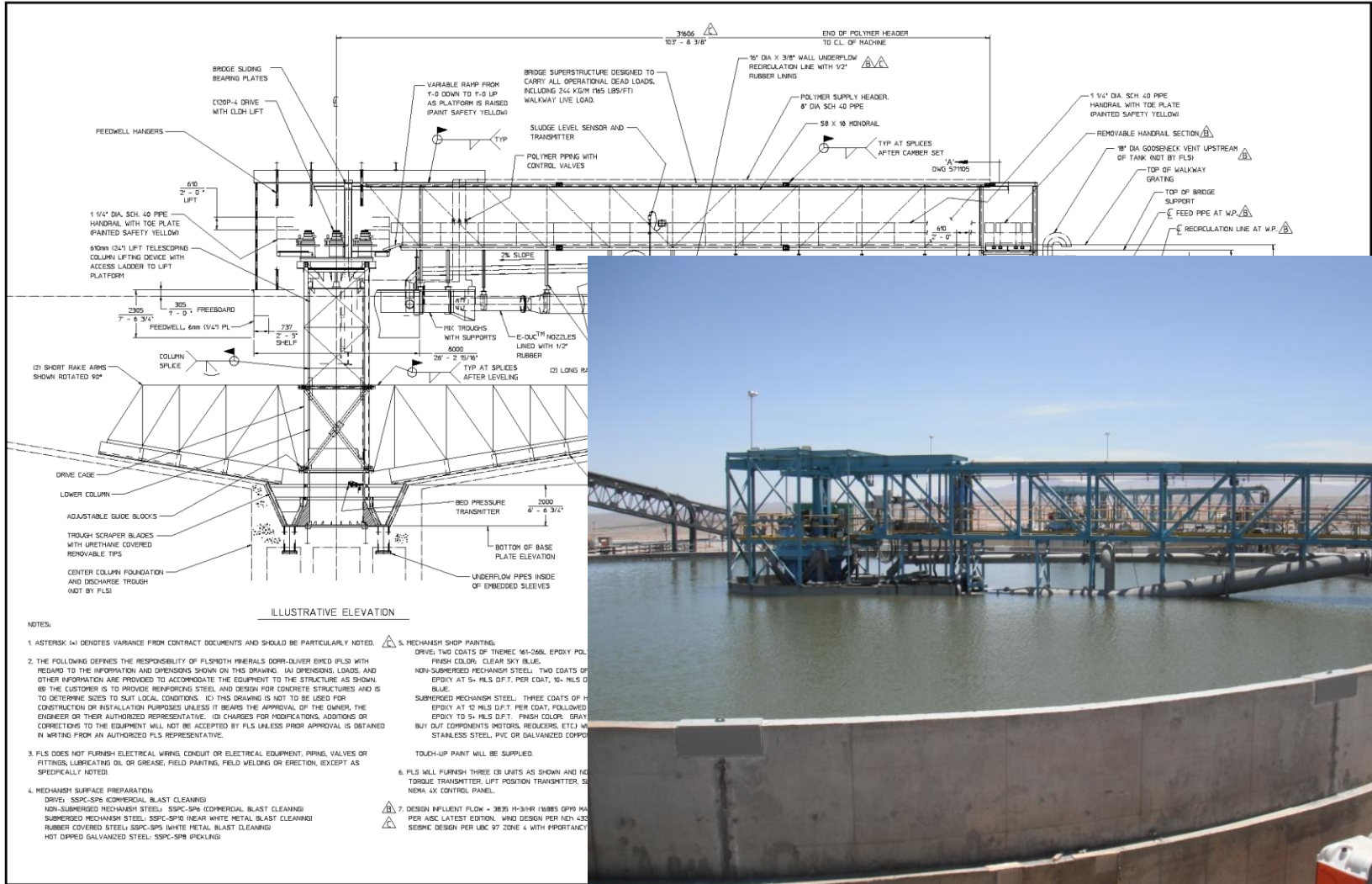


**125m Traction Thickener – Collahuasi, Chile**





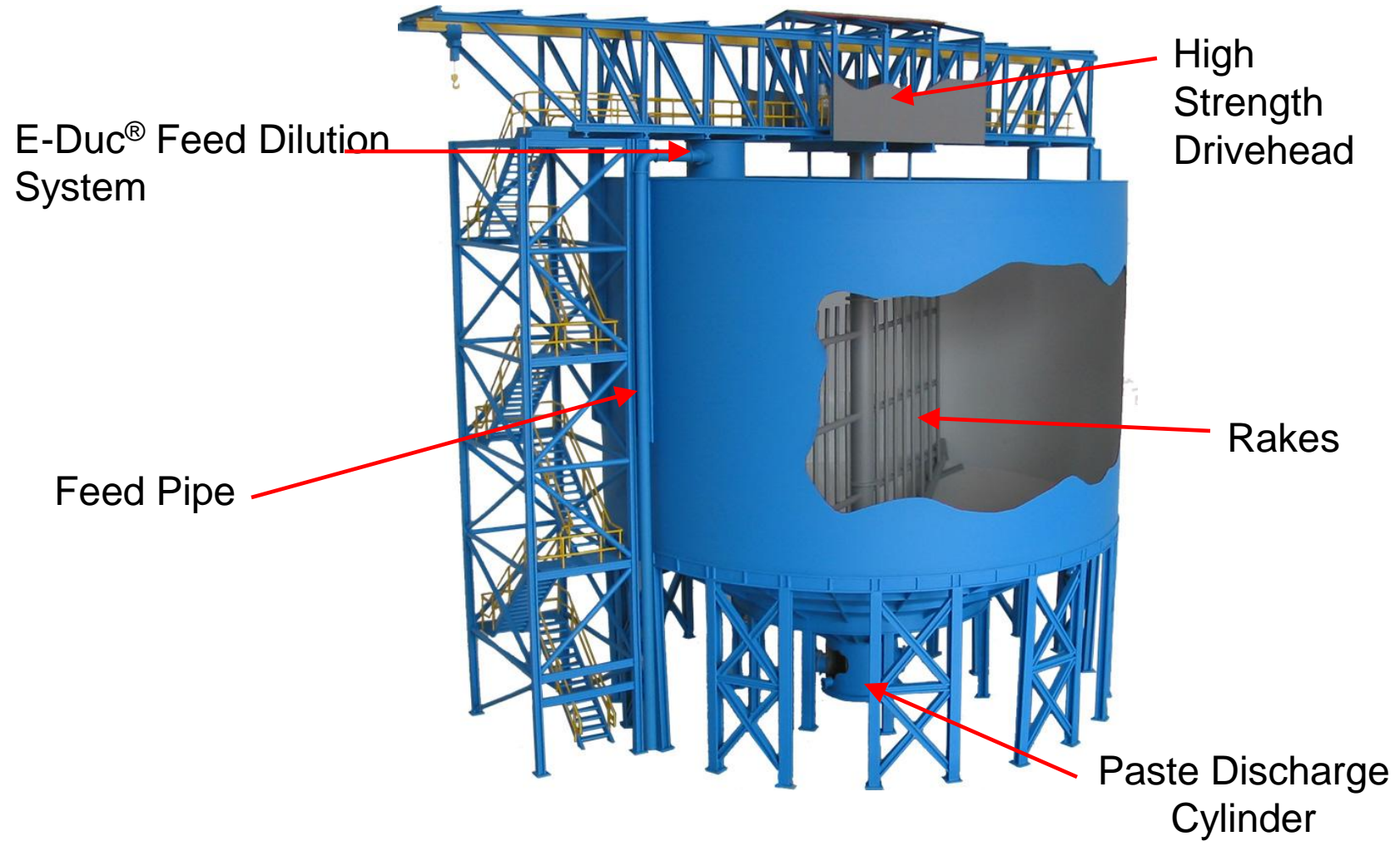




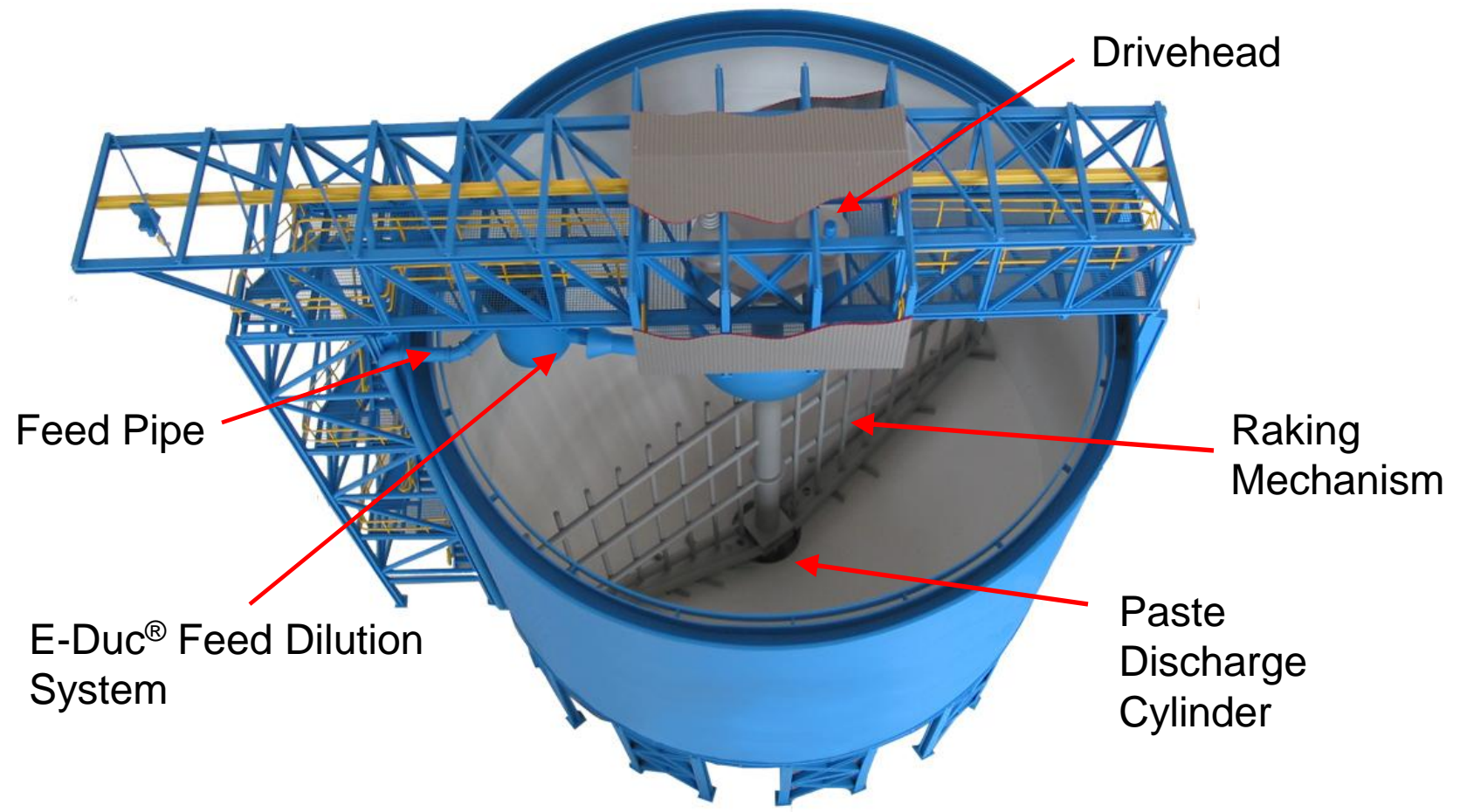


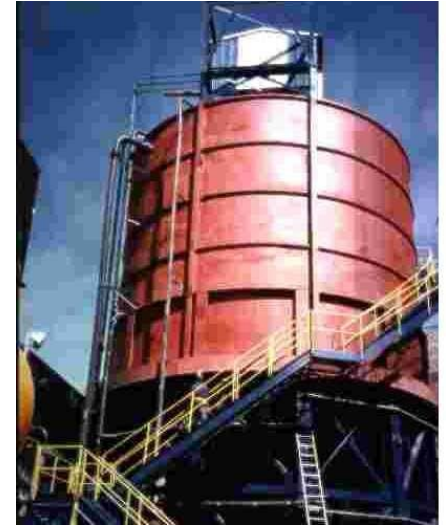
25,000 tpd, 68 wt% underflow















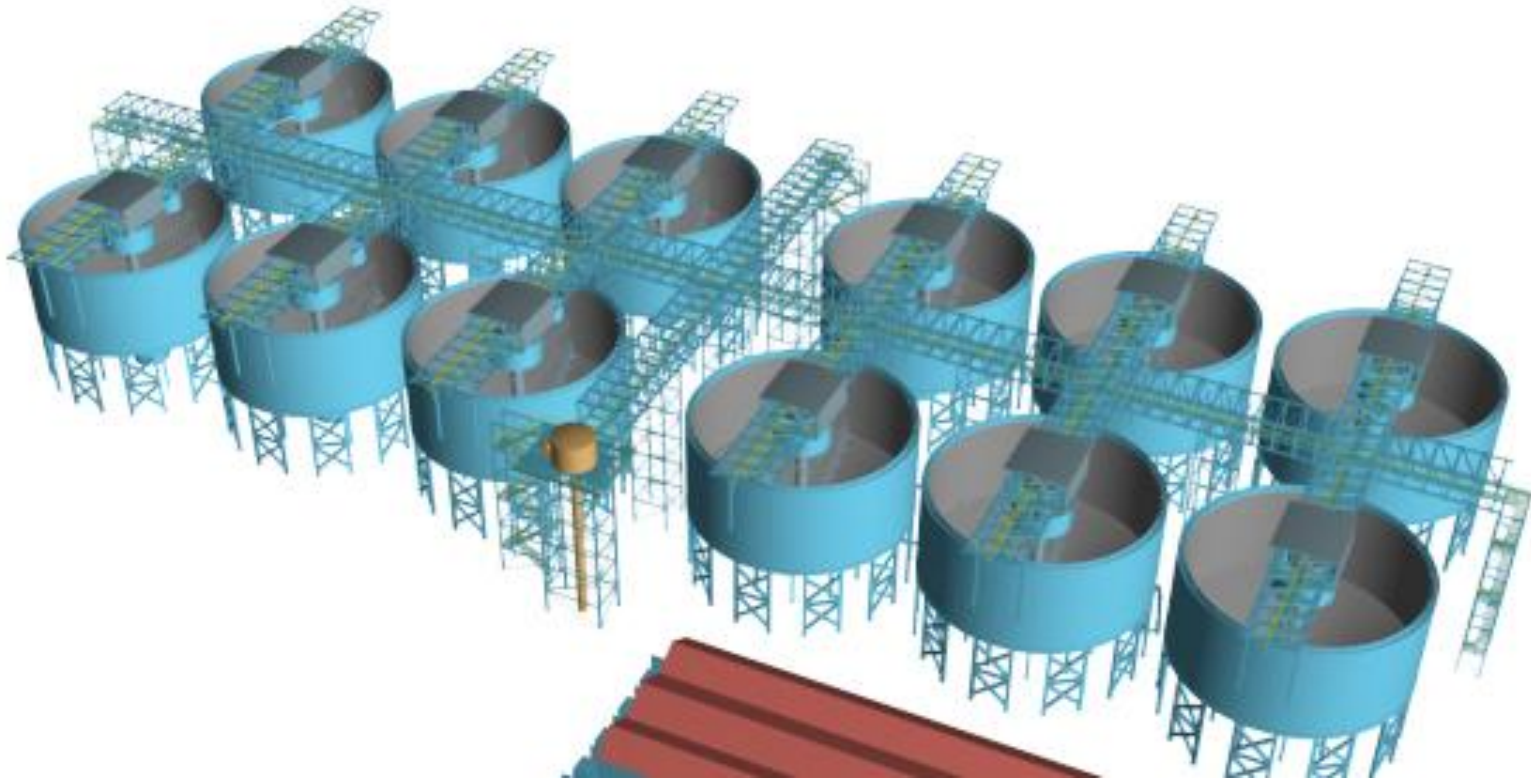








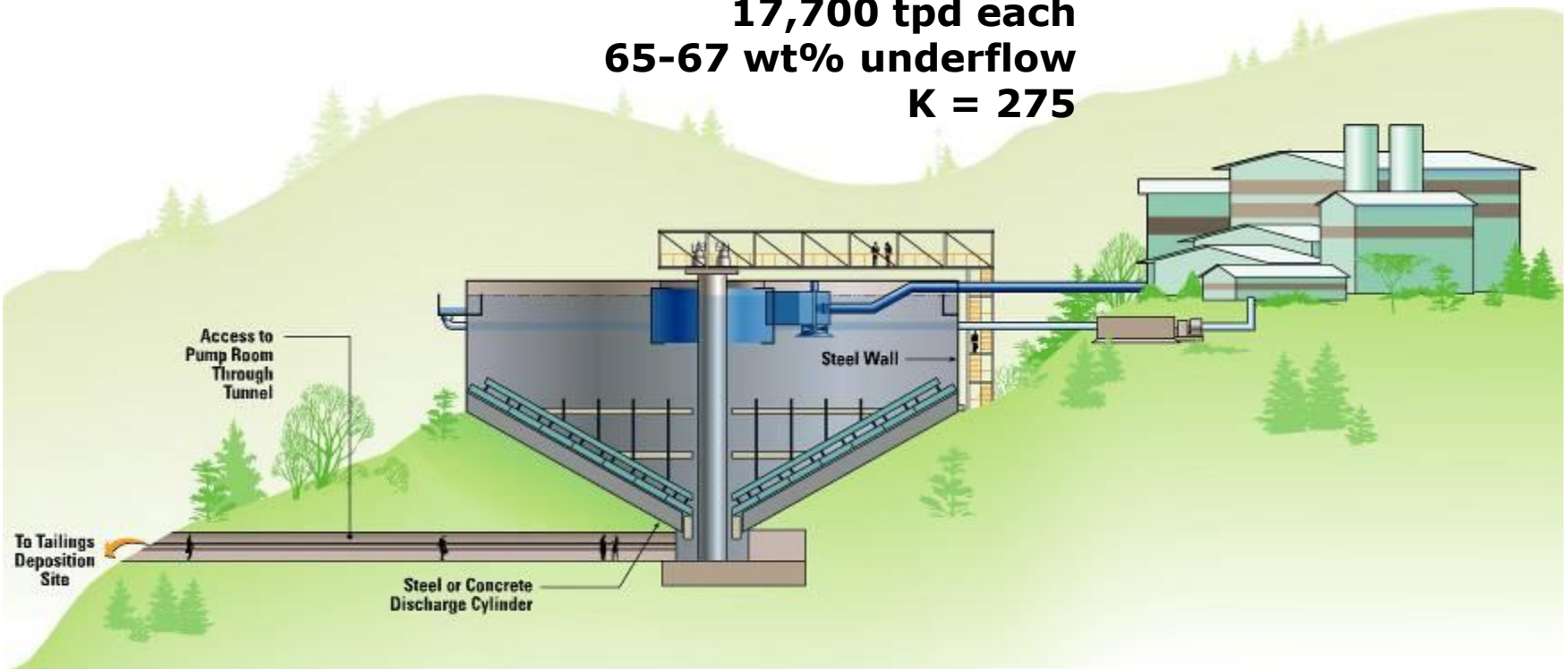
28.7.2001



(12) 24 m DCTs in construction at SCM  
96,000 tpd



**40m Deep Cone Paste Thickener  
In-Ground Installation  
Two units– China Project, Copper Tails  
17,700 tpd each  
65-67 wt% underflow  
K = 275**



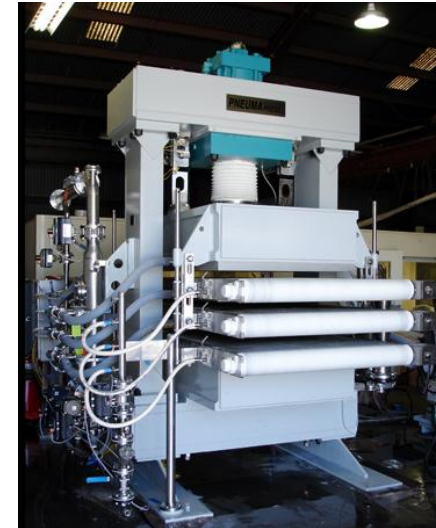
**DEEP CONE PASTE THICKENERS  
40m – CU TAILINGS**







**Pneumapress® Filters**



**Shriver® Filter Presses**



**AFP™ Filter Presses**



**Drum Filters**



**Disc Filters**



**Pan Filters**



**Horizontal Belt Filters**



**SOD Filters**



**Claridisc Filters**



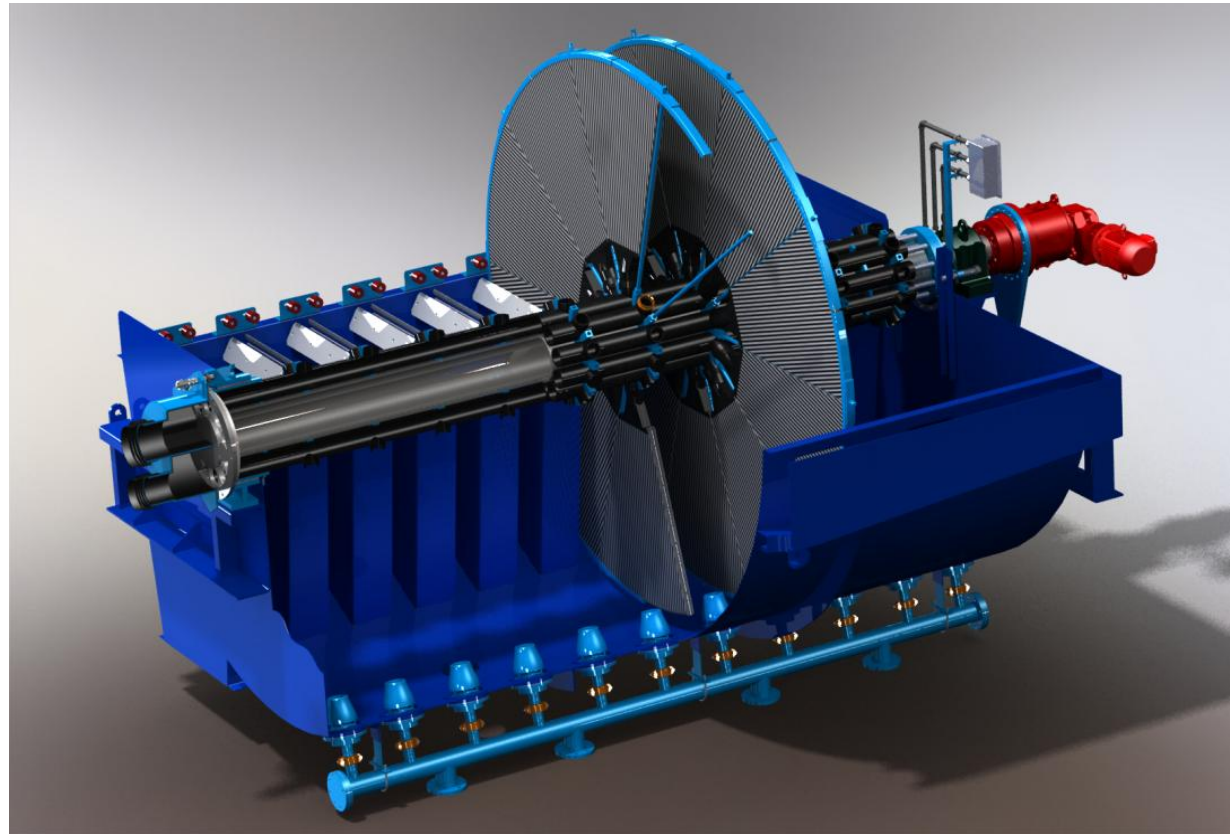


- Used on Finer Material
- 0.25 – 0.5 mt/hr/m<sup>2</sup>
- 75 - 150 mt/hr per filter
- Feed 60 wt%
- Cake Moisture 15-30 wt%





- Gold Production
- 0.36 mt/hr/m<sup>2</sup>
- 60 mt/hr per filter
- Feed 65 wt%
- Cake Moisture 15 wt%



- Paste Thickener
  - 12 m diameter
  - Flotation tails
  - 125 mt/hr
  - 25 – 30 wt% feed
  - 65 – 68 wt% uf
  
- Horizontal Belt Filter
  - 72 m<sup>2</sup> area
  - 72 wt% solids





- Water Recovery
- Environmental Permit Requirements
- Flowsheet optimization
  - Filter
  - Thickener
  - Mobile Staker
- Rosemont
- Gindalbie
- CL Mining
- Moly Mines
- Coal Refuse
- Fly Ash



- Used on Coarse Material
- 1 -4 mt/hr/m<sup>2</sup>
- 250 - 1000 mt/hr per filter
- Feed 60 wt%
- Cake Moisture 15 – 20 wt%

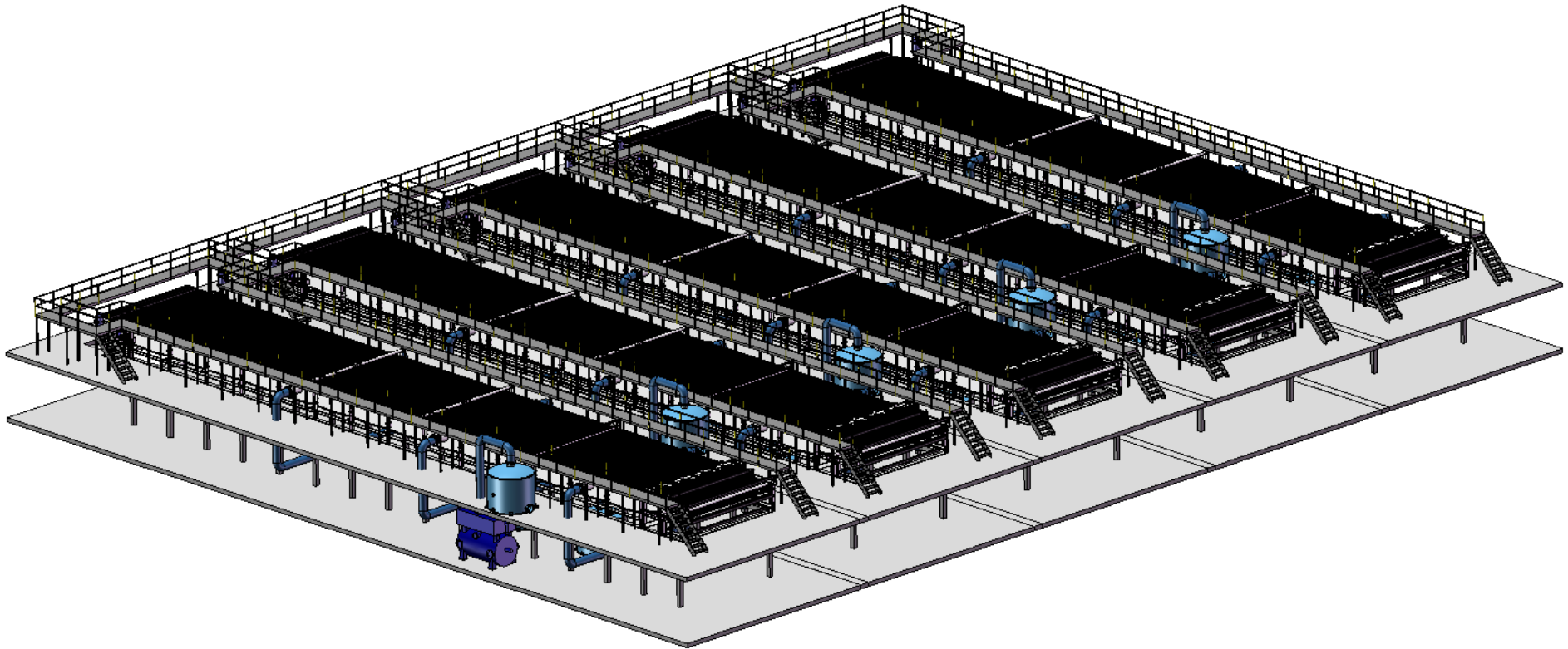




- Fly Ash
- 1.0 mt/hr/m<sup>2</sup>
- Feed Solids 40 wt%
- Cake Moisture 25 wt%
- Cake Staked in Lifts and Capped

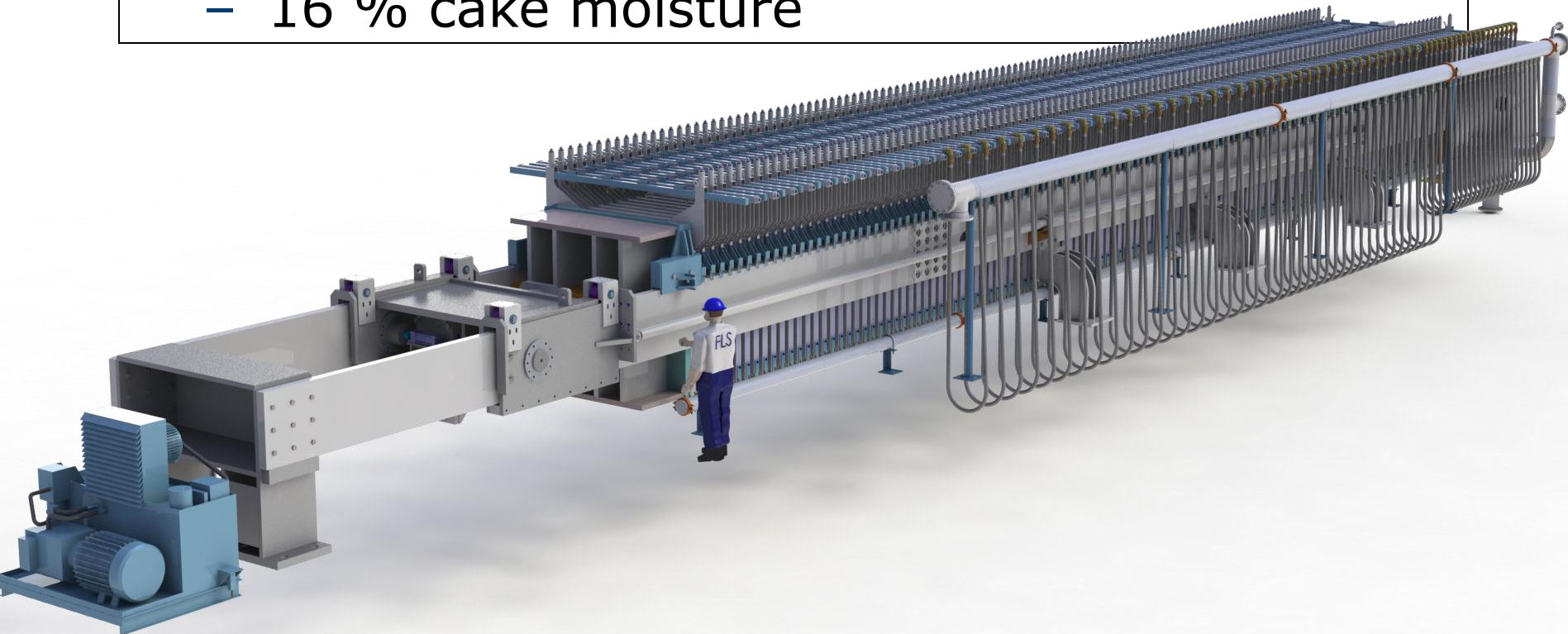


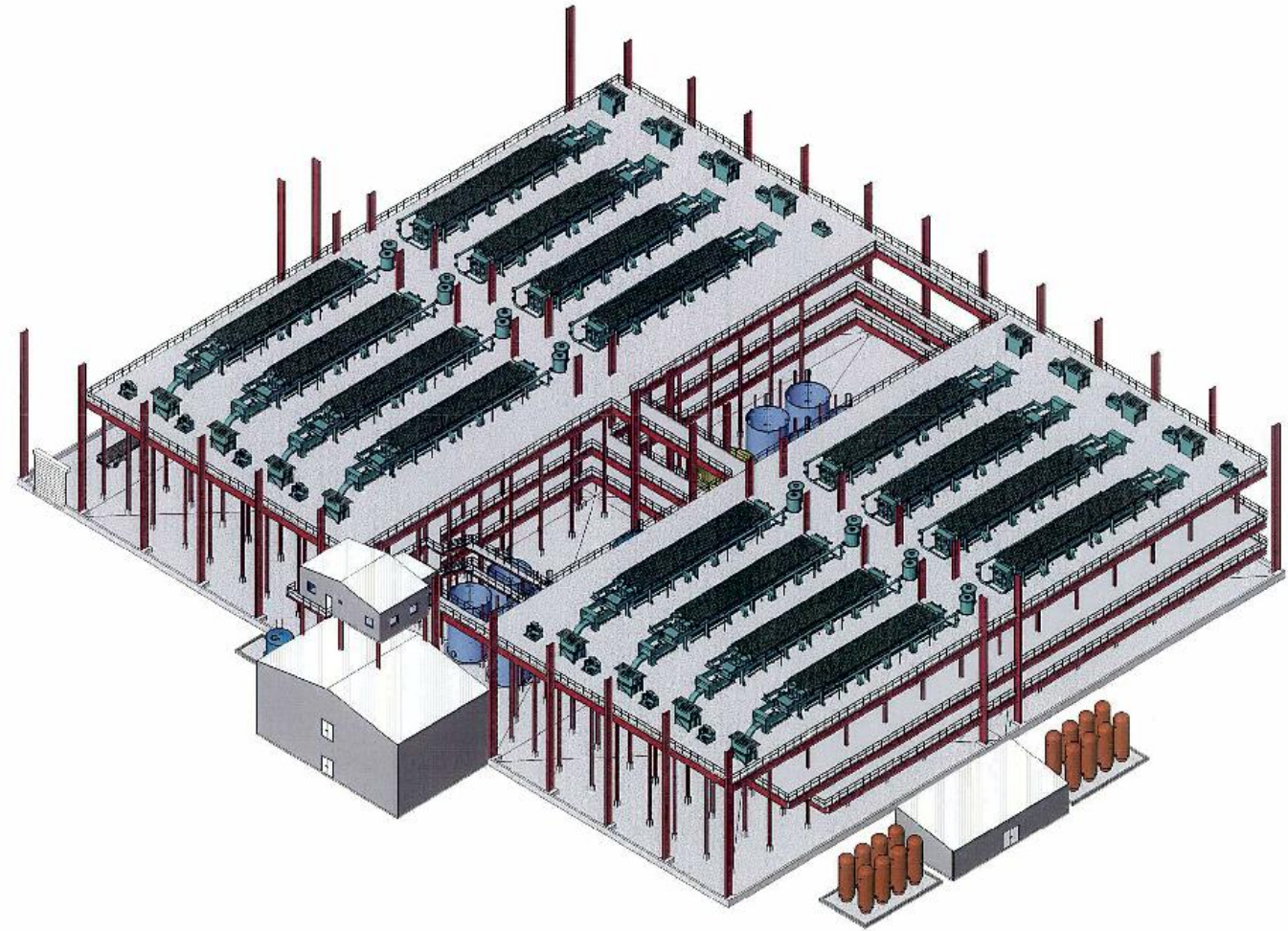
**6.5M273 Filters**



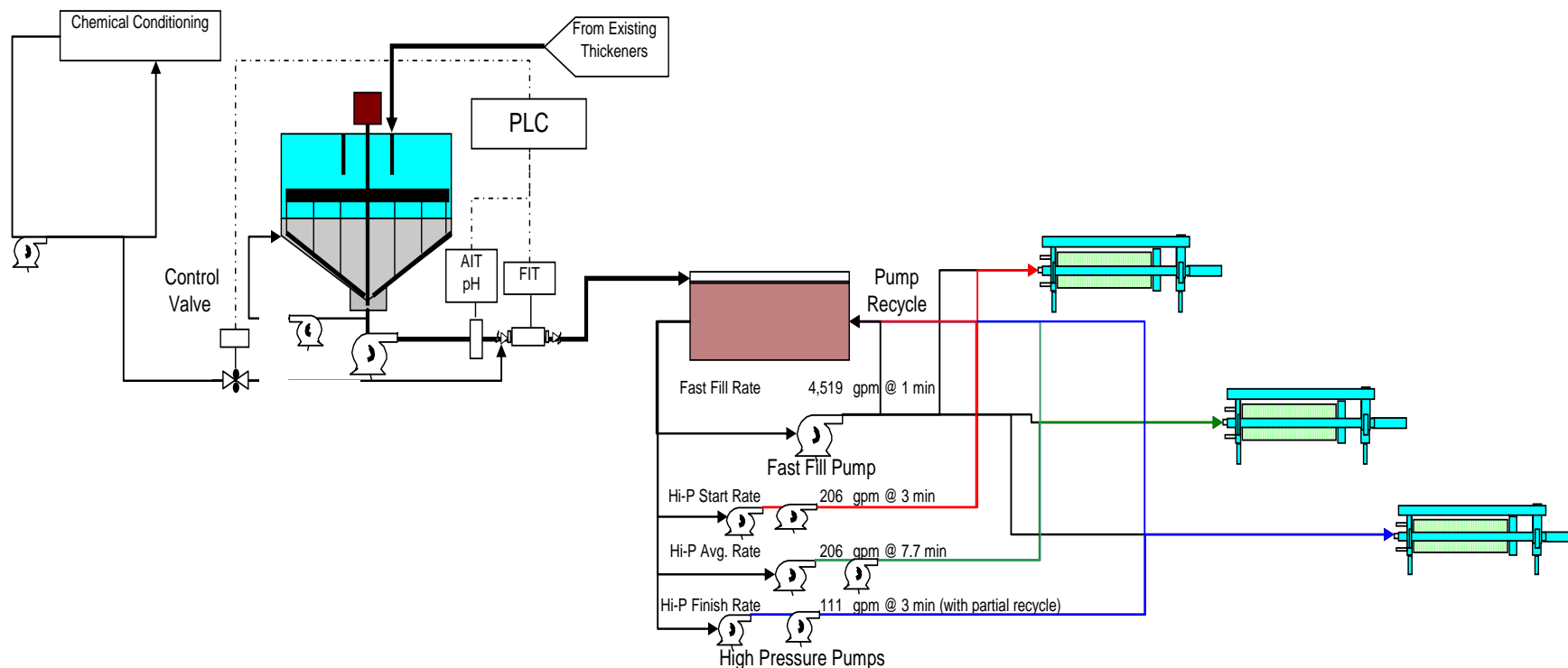


- Largest Minerals Filter Press
  - (14) 2x2 AFP Filters
  - 100,000 mt per day
  - 65 % feed solids
  - 16 % cake moisture









- Paste Thickener
  - 200 t/hr
  - 20 m Diameter
  - 30 wt% feed solids
  - 50 wt% u/f solids
- 2x2 Filter Press
  - 67 t/hr/filter
  - 120 Chambers
  - 15 Bar operating pressure
  - 70 – 75 wt% cake



**Mobile Stackers**



**Belt Conveyors**



**Mine Hoists**



**Pipe Conveyors**





## Stockyard Storage Systems



## Ship Loaders



## Bucket Wheels



## Ship Unloaders



